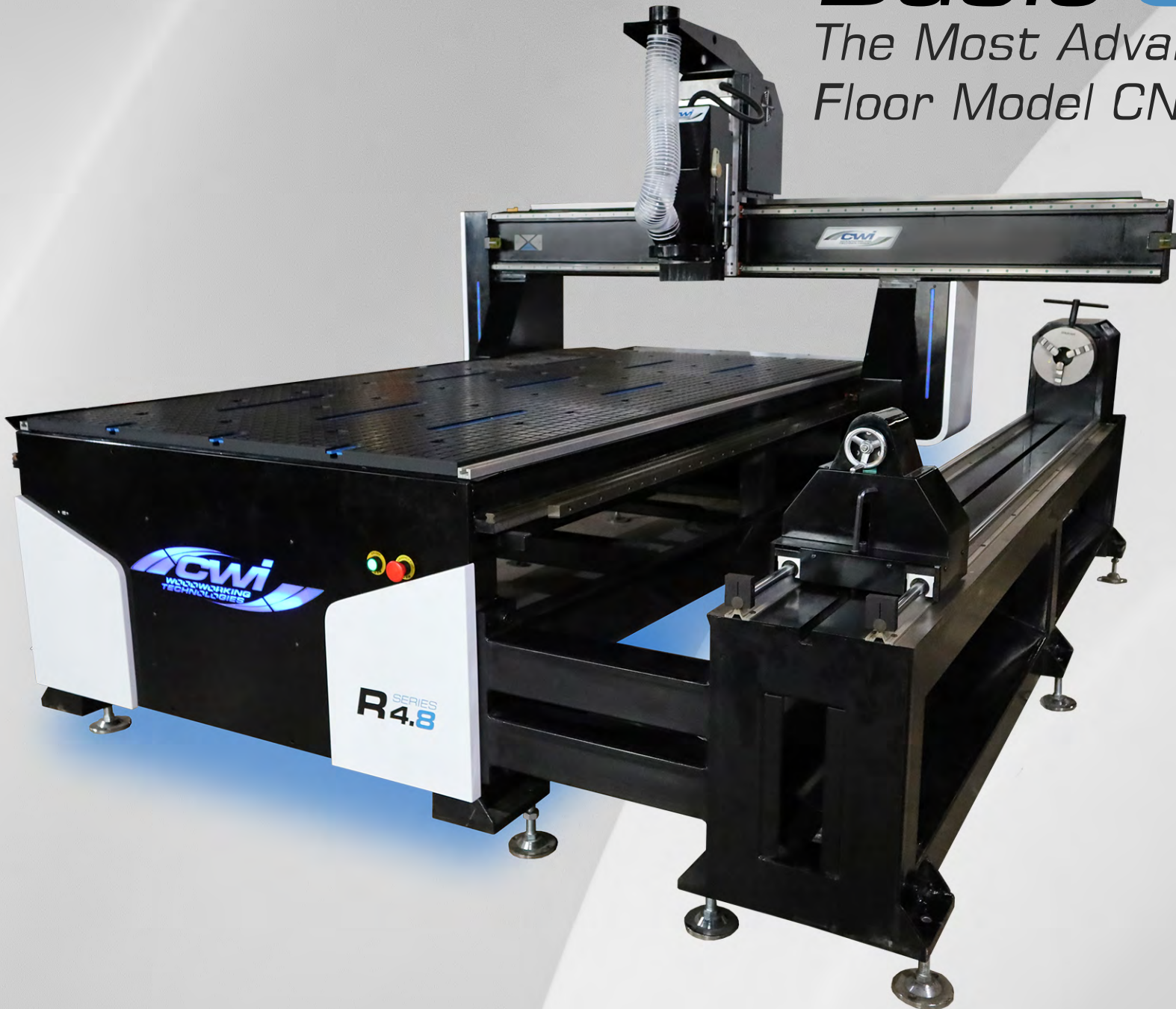


# Basic **CNC**

*The Most Advanced  
Floor Model CNC Router*





# Basic R4.8

*The Most Advanced Floor Model CNC Router*

The Basic "R" Series of machines are truly a unique professional CNC option for not only working in standard 3 axis machining, but also with fourth axis machining for working in the round. The "R" Series machines are perfect for furniture builders, prototyping, stage and movie set production and wood lathe operations.



# Basic R4.8

*The Most Advanced Floor Model CNC Router*

## Standard Features

Side Mounted Rotary Fourth Axis Station with 16"  
Diameter x 84" Length Capacity

12" Gantry Height over table

Industrial 4 HP Italian HSD Brand Continuous Duty  
Cycle High Performance Spindle

Vacuum Ready  
Bakelite Vacuum Table  
with T-Track Work Holding  
System Including Clamps  
Push Button Vacuum Zone  
Control Valves





# Basic R4.8

*The Most Advanced Floor Model CNC Router*



## Standard Features

Integrated Dust Collection with a 4" "Above-the-table" Connection

Easy Adjust Dust Hood with Swing-Away Access for Changing Tooling

THK Linear Guide Rails

NC Studio G3 Controller with Emergency Stop

USB Information transfer port with program storage



# Basic R4.8

*The Most Advanced Floor Model CNC Router*



## Standard Features

Integrated Electrical Control Cabinet Under Frame of Machine to Save Floor Space

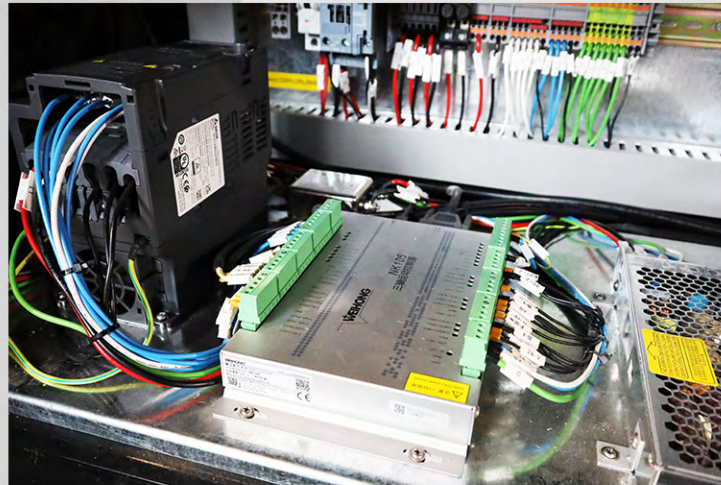
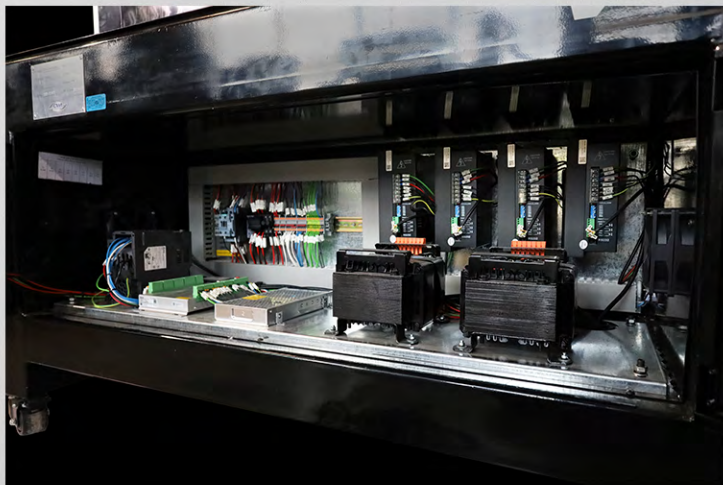
5 High torque NEMA 34 stepper drive motors

Shimpo Direct Gear Reducers

20mm $\varnothing$  Precision ball screw on Z axis

Helical rack and pinion on X and Y axis

Heavy-Duty Casters Included for Ease of Movement



## Electrical Data:

Disconnect w/ safety lock out included

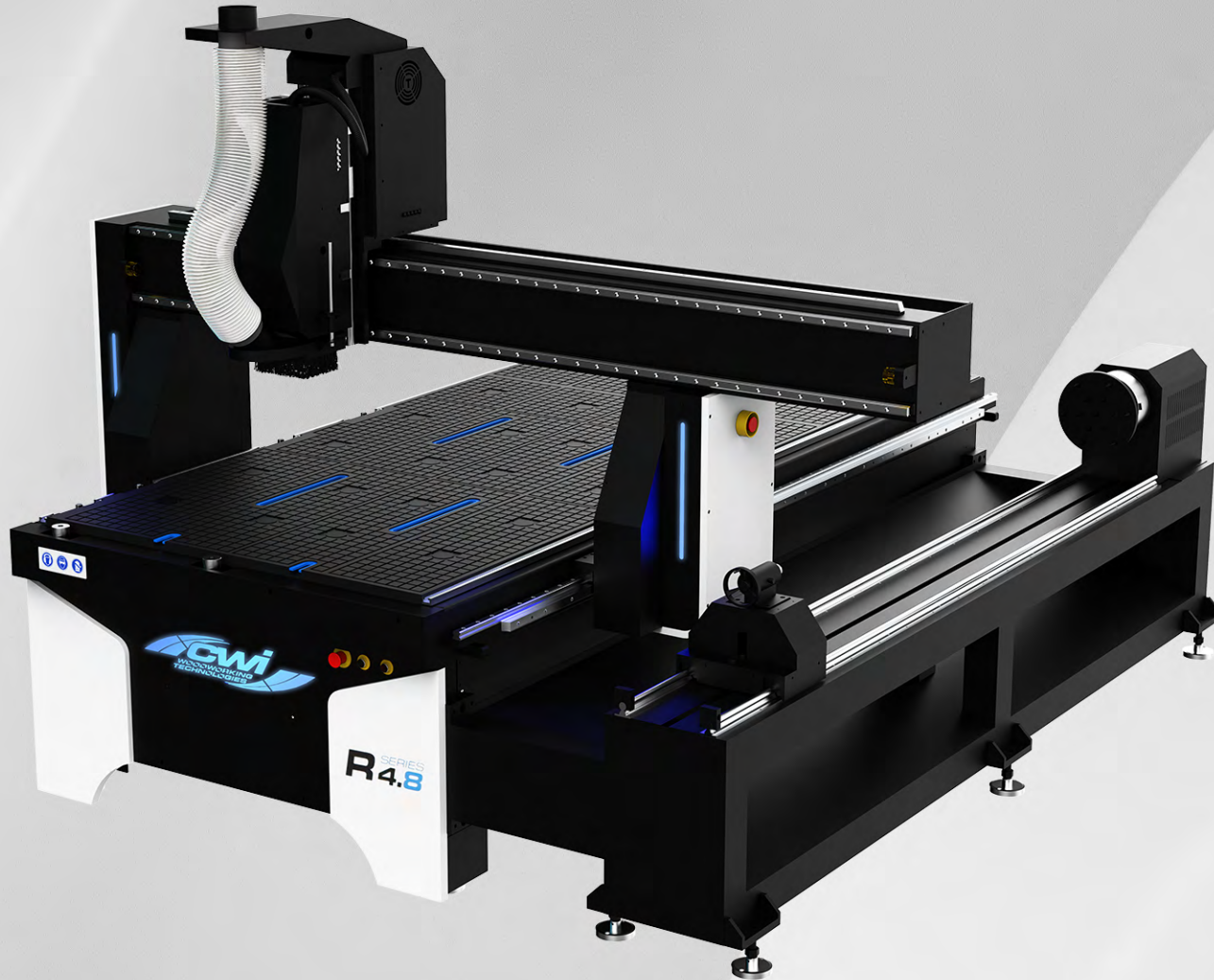
30A 220V 1PH Service

CSA Approved



# Basic R4.8

*The Most Advanced Floor Model CNC Router*



## Options Available

8 HP HSD Brand Router Spindle

16" Gantry Height

17 Piece Tooling Package

V-Carve Pro Software

Aspire Software

3 HP CWI Cyclone Dust Collector

Becker KVT 3.14 Vacuum Pump

Green BVC Vacuum Pods

Six Pneumatic Pop-Up Pins for  
Simple Home Reference

# Basic R4.8

*The Most Advanced Floor Model CNC Router*



Starting at: \$27,999.95



# **Basic R4.8**

*The Most Advanced Floor Model CNC Router*

